



Pressure Gauge Kit and Test Couplings



Overview

The Eaton® pressure gauge kit and screw together test couplings provide accurate and efficient pressure control and monitoring of your hydraulic system, while minimizing the introduction of contamination. The complete kit is pre-packaged with Eaton's most common adapters and test couplings.



Applications

- Hydraulics and mineral based fluids
- Agriculture
- Construction
- On-Highway
- Industrial

Features

- Test system at working pressure
- 630 bar (9,000 psi) working pressure
- 345 bar (5,000 psi) connect under pressure
- Accurate pressure control and system monitoring
- Leak free connection before piston valve opens
- Simple and fast screw together connections
- Self locking caps
- Viton seals

Product Specifications

Couplings/Adapters

- Zinc Nickel Plated Steel
- Viton Seals
- 345 bar (5,000 psi) connect under pressure
- 630 bar (9,000 psi) working pressure

Hose Assemblies

- 630 bar (9,000 psi) working pressure
- 20mm (.75") bend radius
- Nominal Bore 2mm (.08")
- Hose cover/core - PA 11/12
- Reinforcement - synthetic fiber

Gauges

- Polished Brass Casing
- Glycerine Filled
- Dual Scales
- Relief Valve
- Acrylic Lens



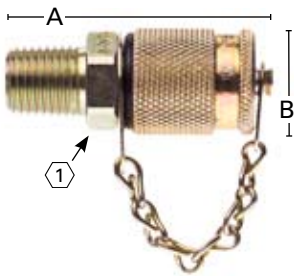
Pressure Gauge Kit and Individual Components

Pressure Gauge Kit



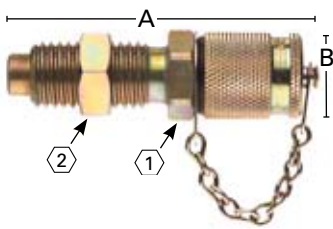
COMPLETE KIT #	COMPONENT PART #	DESCRIPTION	QTY PER KIT
FF14802	FF14783	1/8" NPT Test Coupling	2
	FF14784	1/4" NPT Test Coupling	2
	FF14787	7/16-20 UNF Test Coupling	1
	FF14788	9/16-20 UNF Test Coupling	1
	FF14794	1/4" NPT Gauge Adapter	3
	FF14796	Union Adapter	2
	FF14798	60" Test Hose Assembly	2
	FF14799	(-) 30 in/Hg - 30 psi Gauge	1
	FF14800	1,000 psi Gauge	1
	FF14801	7,500 psi Gauge	1

Standard Test Couplings



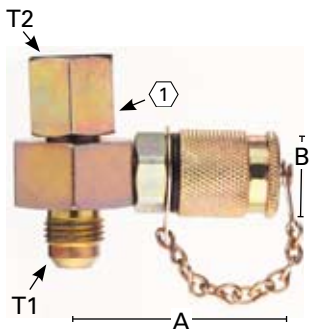
PART #	THREAD	HEX (1)	A	B	BAG QTY*
		mm/in	mm/in	mm/in	
FF14783	1/8" NPT	17,0/.67	45,0/1.77	20,0/.79	4
FF14784	1/4" NPT	17,0/.67	50,0/1.97	20,0/.79	4
FF14785	M14	19,0/.75	49,0/1.93	20,0/.79	3
FF14786	M16	22,0/.87	48,5/1.91	20,0/.79	3
FF14787	7/16-20 UNF	17,0/.67	47,0/1.85	20,0/.79	4
FF14788	9/16-20 UNF	19,0/.75	47,5/1.87	20,0/.79	4

Bulkhead Couplings



PART #	THREAD	HEX (1)	HEX (2)	A	B	BAG QTY*
		mm/in	mm/in	mm/in	mm/in	
FF14789	M16	17,0/.67	19,0/.75	72,0/2.83	20,0/.79	2

Swivel Run Tee with Test Coupling

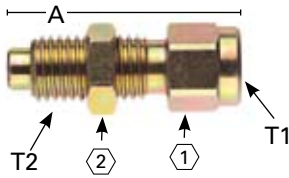


PART #	THREAD #1	THREAD #2	HEX (1)	A	B	BAG QTY*
			mm/in	mm/in	mm/in	
FF14790	7/16-20 UNF	7/16-20 UNF	27,0/1.06	47,7/1.88	20,0/.79	2
FF14791	9/16-18 UNF	9/16-18 UNF	27,0/1.06	47,7/1.88	20,0/.79	2
FF14792	3/4-16 UNF	3/4-16 UNF	27,0/1.06	47,7/1.88	20,0/.79	2

* When the indicated part number is ordered, the bag quantity is the number of pieces supplied. For example, if a quantity of one FF14792 is ordered, one bag containing two pieces will be delivered.

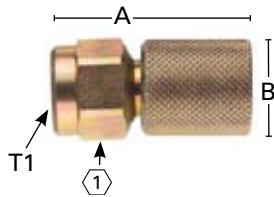
Pressure Gauge Kit Individual Components

Gauge Adapter



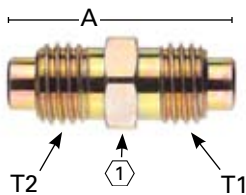
PART #	THREAD #1	THREAD #2	HEX (2)	HEX (1)	A	BAG QTY*
			mm/in	mm/in		
FF14793	1/4" NPT	M16	19,0/.75	19,0/.75	54,0/2.13	2

Direct Gauge Adapter



PART #	THREAD #1	HEX (1)	A	B	BAG QTY*
		mm/in	mm/in	mm/in	
FF14794	1/4" NPT	19,0/.75	40,5/1.59	20,0/.79	2
FF14795	7/16-20 UNF	19,0/.75	41,0/1.61	20,0/.79	2

Union Adapter



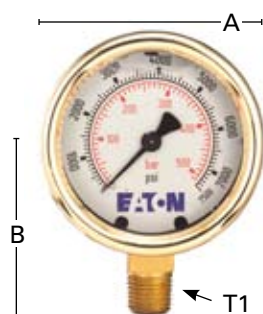
PART #	THREAD #1	THREAD #2	HEX (1)	A	BAG QTY*
			mm/in	mm/in	
FF14796	M16	M16	17,0/.67	42,5/1.67	2

Test Hose Assembly



PART #	THREAD	CUT LENGTH	OVERALL LENGTH	BAG QTY*
		mm/in	mm/in	
FF14797	M16	872,0/34.33	914,4/36.00	1
FF14798	M16	1482,0/58.35	1524,0/60.00	1

Gauges



PART #	THREAD #1	A	B	RATING	BOX QTY*
		mm/in	mm/in		
FF14799	1/4" NPT	65,3/2.57	53,3/2.10	(-)30 in/Hg - 30 psi	1
FF14800	1/4" NPT	65,3/2.57	53,3/2.10	0 - 1,000 psi	1
FF14801	1/4" NPT	65,3/2.57	53,3/2.10	0 - 7,500 psi	1

* When the indicated part number is ordered, the bag quantity is the number of pieces supplied. For example, if a quantity of one FF14796 is ordered, one bag containing two pieces will be delivered.

Complimentary Eaton Diagnostic Products

FD 90 Diagnostic Couplings



The Eaton FD90 Series diagnostic coupling is designed to push-to-connect and disconnect pressure gauges to hydraulic systems, eliminating the need for permanent gauges.

Reference Eaton Quick Disconnect Catalog E-MEQD-MC001-E.

- SAE J1502 Interchange
- 7,000 psi maximum operating pressure
- Automatic sleeve for one hand push-to-connect operation
- Flush face valving provides minimum fluid loss and air inclusion
- Connection and disconnection at 500 psi
- Standard seal material – Buna-N
- Standard body material – Zinc plated steel

FD15 Series Oil Sampling Valve



Eaton FD15 oil sampling valves provide in-line sampling of system fluids without system shutdown, usually in less than one minute and without fluid contamination. Applications include: engine oil, lubricating oil, transmission fluids and hydraulic fluids in mobile construction equipment, military vehicles, trucks and stationary equipment.

Reference Eaton Quick Disconnect Catalog E-MEQD-MC001-E.

- 2 valves – 0-50 psi and 50-300 psi
- Recommended for dynamic fluid lines in low pressure return lines
- Construction – Corrosion resistant plated steel with brass internal components and Buna-N seals
- 1,200 psi burst pressure
- 500 Micron minimum particle restriction
- Standard body material – Zinc plated steel



Eaton
Hydraulics Operations USA
14615 Lone Oak Road
Eden Prairie, MN 55344
USA
Tel: 952 937-9800
Fax: 952 974-7722
www.hydraulics.eaton.com

Eaton
Hydraulics Operations Europe
Route de la Longeraie 7
1110 Morges
Switzerland
Tel: +41 (0) 21 811 4600
Fax: +41 (0) 21 811 4601

Eaton
Hydraulics Operations Asia Pacific
11th Floor Hong Kong New World Tower
300 Huaihai Zhong Road
Shanghai 200021
China
Tel: 86-21-6387-9988
Fax: 86-21-6335-3912

